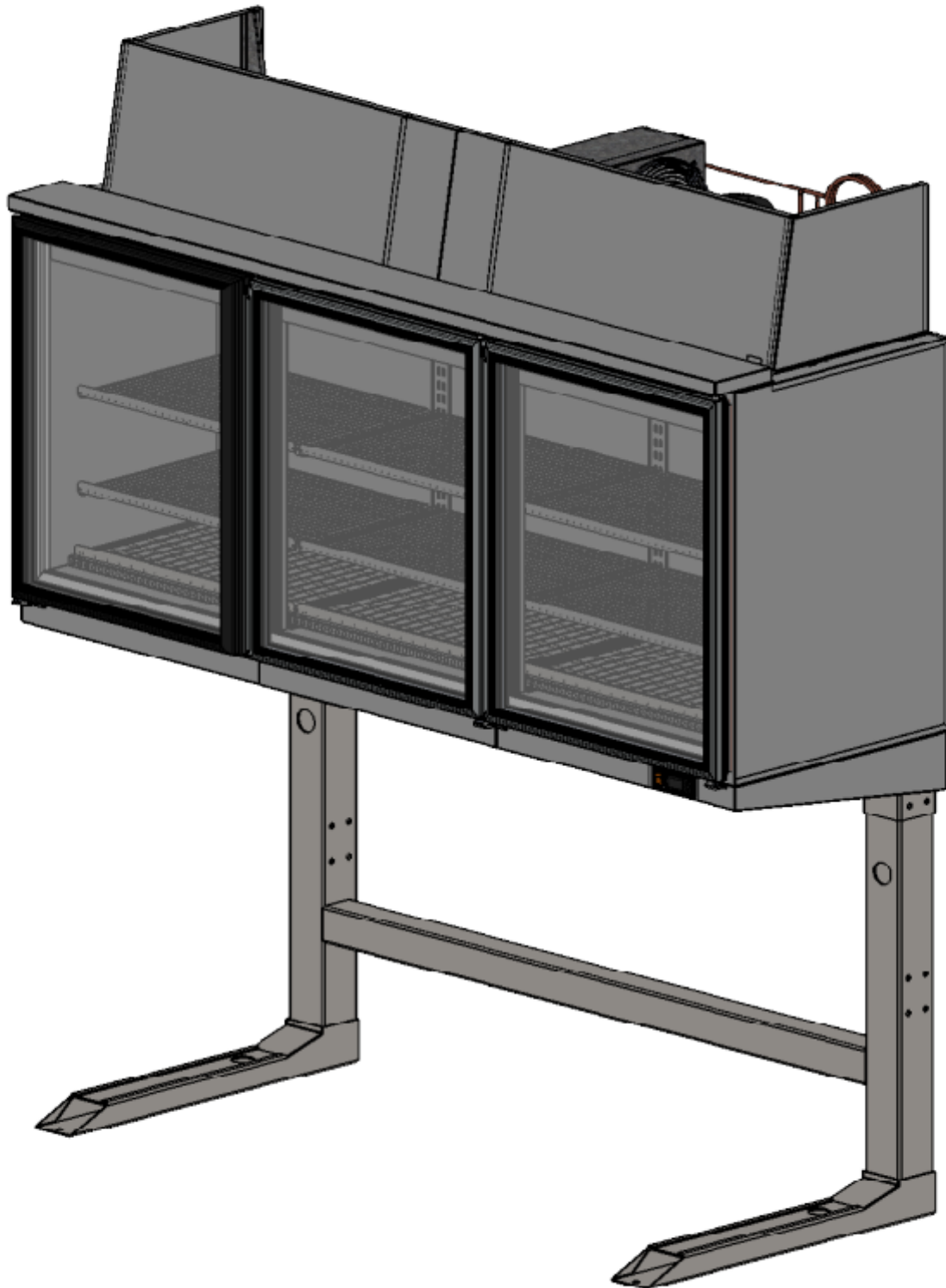


UA

Інструкція з експлуатації
вітрини холодильної



CENTAUR



FROM THE CITY

general information	3
Limitation of liability	3
Explanation of symbols	4
1. STANDARDS AND DIRECTIVES	5
2. TECHNICAL DATA	5
3. CONSTRUCTION OF THE SHOWCASE	7
4. SAFETY A	8
5. PLACEMENT REQUIREMENTS	9
6. INSTALLATION AND CONNECTION	10
7. START-UP	14
8. PRODUCT STORAGE TEMPERATURE	14
9. TERMS OF OPERATION	14
10. TEMPERATURE SETTING	14
11. DEFROST MODE	16
12. PRODUCT LOADING	17
13. MAINTENANCE	17
14. POSSIBLE FAULTS AND THEIR REMEDIES	19
15. MAINTENANCE AND SERVICE	20
16. STORAGE AND TRANSPORTATION	20
17. DISPOSAL	20
18. WARRANTY FROM THE MANUFACTURER	21

GENERAL INFORMATION

This manual is intended for studying the rules of installation, operation, maintenance and safe operation of the refrigerated display case, hereinafter referred to as the display case.

The manual is an integral part of the display case and must be kept and available for use throughout the display window's service life.



FORBIDDEN! Copy or transfer this manual to third parties without the manufacturer's consent. The instruction is intended for users of the refrigerated display case.



Before starting to operate the showcase, read the instructions carefully, pay special attention to the "Safety" section. Compliance with the rules and recommendations given in this manual will ensure the safe and trouble-free operation of the showcase for a long period of operation.

The operating instructions must be available to the staff during the period of installation, operation and maintenance of the showcase.

When accepting the display case, it is necessary to make sure of the integrity of the packaging, the absence of mechanical damage to the case, check the presence of a mark in the passport that verifies compliance with quality requirements, completeness and working capacity according to this instruction, make sure of the mark about the date of manufacture and sale of the display case, the correspondence of the factory number on the nameplate of the display case number in the passport



The manufacturer does not accept complaints related to the failure of the showcase during the warranty period, in case of non-compliance with the rules of storage, operation and maintenance of the showcase.



WARNING! In connection with the constant work on improving the product, which increases its reliability and improves some, changes may be made to the design that are not reflected in this manual.

LIMITATION OF LIABILITY

All information in this manual was compiled taking into account current standards and legal norms, as well as empirical values of the manufacturer. The manufacturer is not responsible for damage to people or property (equipment, goods, etc.) resulting from:

- Failure to comply with the instructions and safety rules contained therein;
- Failure to comply with local safety regulations;
- Improper use;
- Engagement of untrained operational and service personnel;
- Unauthorized conversion and technical changes by the customer on his own;
- Use of spare parts not approved by the manufacturer;
- Malfunction of the power supply or electrical safety devices.

Failure to comply with the above points will also void the warranty.
The manufacturer reserves the right to make technical changes to optimize and improve the efficiency of the equipment.

EXPLANATION OF SYMBOLS

Before studying the instructions, familiarize yourself with the information marks:



General warning sign



Warning about non- hazardous substances



Electrical voltage warning



Tipping hazard warning



Slip hazard warning



Low temperature/freeze warning



Hot surface warning



Wear protective gloves



Do not allow the occurrence of open flame , the presence of fire, an open source of ignition, as well as smoking



Drilling is not allowed in the showcase

1. STANDARDS AND DIRECTIVES

Refrigerated showcase (VH) " CENTAUR " with a dynamic type of cooling and a built-in unit, intended for storage and demonstration of pre-frozen products during the sales period.

In irib responds position following directives:

- Directive on machines, mechanisms and machine equipment 2006/42 / EU;
- Electromagnetic Directive compatibility 2014 / 30EU;
- Directive on low voltage equipment 2014 / 35EU.

Output products at the enterprise is carried out in an integrated management system in accordance with the requirements standards

ISO 9001:2015;

ISO 1400:2015;

ISO 45001:2018, IDT .

Standards used in the design and manufacture of products:

EN ISO 23953-2:2015

2. TECHNICAL DATA

Table 1 shows the technical data of the " CENTAUR " showcase.

Table 1 - Technical parameters

Technical characteristics	CENTAUR 2.1	CENTAUR 2.5
Dimensions (length/width/height), mm	2100/816/2292	2500/816/2292
Dimensions including packaging, (length/width/height), mm	2220/920/2020	2620/920/2020
Total volume , l	800	970
Useful volume , l	560	670
Weight (net /gross), kg	240/300	280/350
Temperature regime, °C	-18...-23	
Voltage in the alternating current network, V	220	
Current frequency, Hz	50	
Nominal load per shelf, kg	26	26

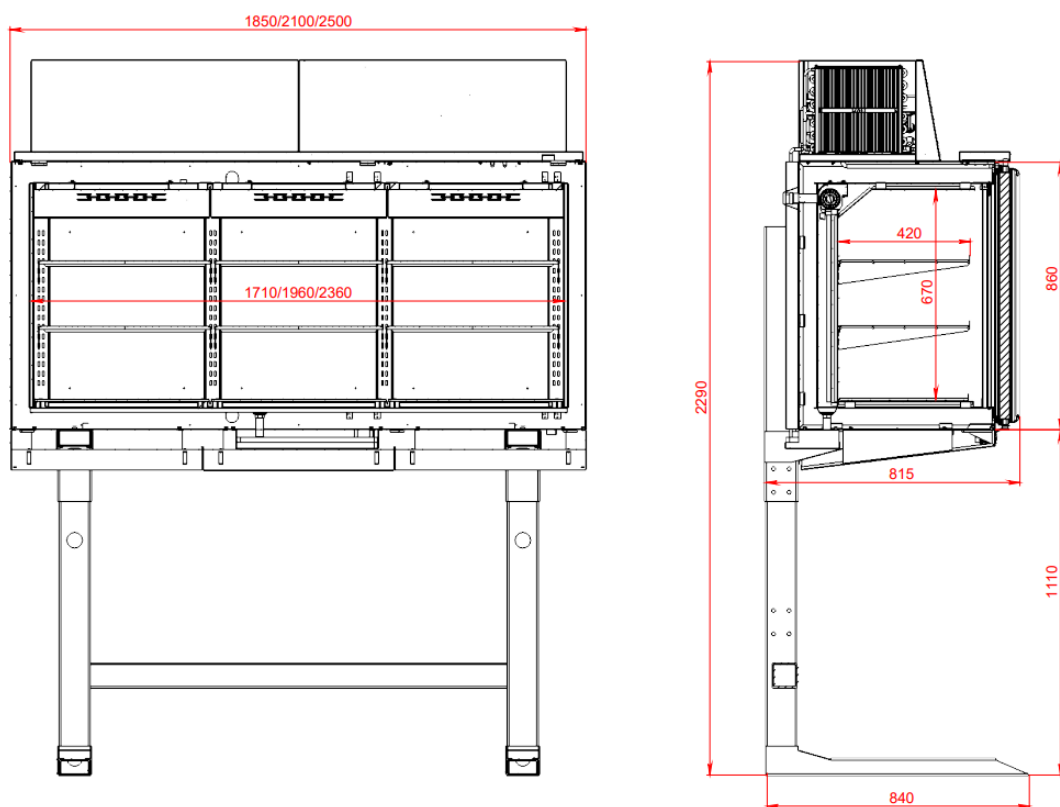


Figure 1 – Dimensional drawing

When working with the equipment, it is necessary to observe the information on the sign . This is a sticker on the inner (right side) panel of the equipment that contains important technical data.

- Name and type of equipment
- The serial number
- Climate class
- Nominal voltage and nominal frequency
- Current and power
- Refrigerant brand and quantity
- Date of manufacture
- Other technical data.

Examples of climate classes

Climatic class according to ISO 23953-2	Ambient temperature, °C	Relative humidity, %
3	25	60
4	30	55

3. CONSTRUCTION OF THE SHOWCASE

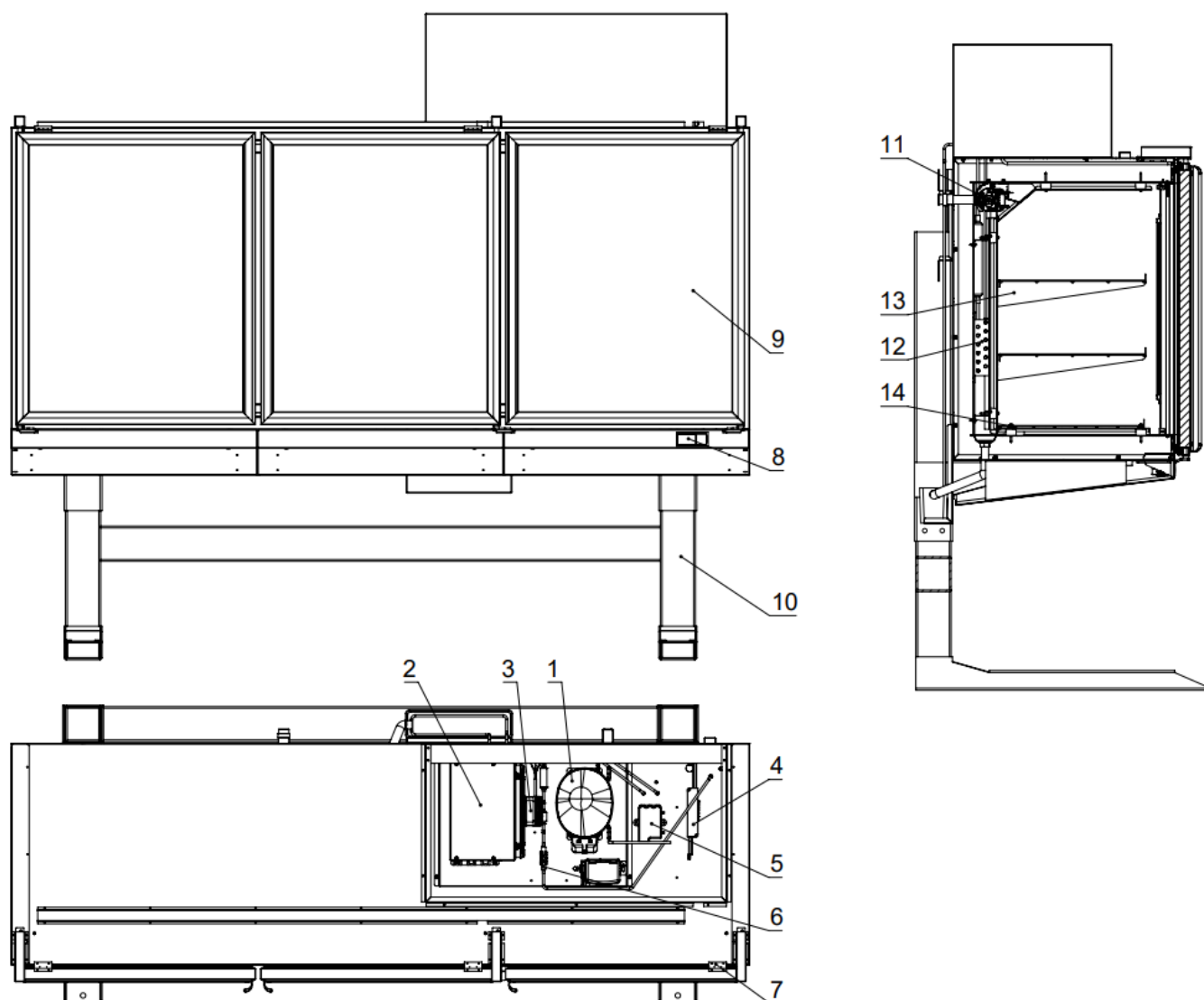


Figure 3 – Location of main nodes and components.

1. Compressor;
2. Capacitor;
3. Condenser fan;
4. LED lamp power supply unit;
5. Terminal box;
6. Solenoid valve;
7. Herkon ;
8. Thermostat;
9. Doors;
10. Stand;
11. Fan of the heat exchange battery;
12. Heat exchange battery;
13. Shelf;
14. Foundation

4. SAFETY A

4.1. ELECTRIC VOLTAGE

Work on the electrical part should be performed only by specialists. In the event of a malfunction or damage, contact the service department.



Touching live parts can result in electric shock



Risk of fire due to sparks or overloading

- Do not connect a damaged unit or damaged parts (such as a power cord) to the power supply circuit
- Do not remove protective devices and covers installed on the unit
- Only pre-trained personnel can turn on/off the showcase
- Only qualified specialists are allowed to replace damaged parts, for example: power cord, lighting elements
- Do not pinch or bend the power cord
- Do not use extension cords or power strips with outlets

4.2. REFRIGERANT CIRCULATION CIRCUIT

Work on the refrigerant circulation circuit should be performed only by specialists. In the event of a malfunction or damage, contact the service department.



Refrigerant is extremely flammable . If there is a leak, the refrigerant can leak out and form a flammable air-air mixture.



- Refrigerant R -290 according to the EN 378-1 standard belongs to safety group A3. The used refrigerant and filling volume are indicated on the nameplate

- There should be no sources of ignition nearby (heat, sparks, open flames , hot surfaces)

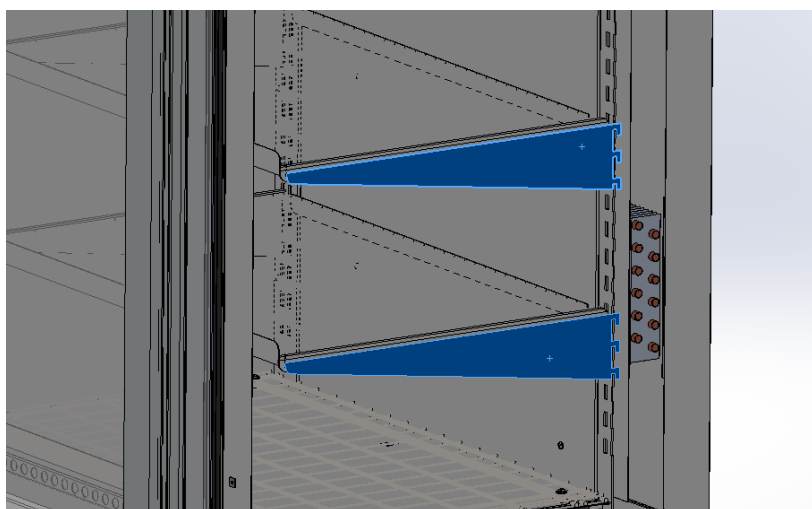


- refrigerant circuit

- Do not allow pipelines to be pinched or bent

- The opening of the circulation circuit and pumping of the refrigerant should be carried out only in well-ventilated rooms during the period of time when there is no trade or in the open air
- Do not carry out drilling or other work on the display case

4.3 . MECHANICAL HAZARDS



- **Risk of injury due to the falling of display shelves** loaded with product. The shelves must be completely fixed in the holes intended for this purpose
- **It is possible to clamp the hands** from the side of the loops or handles. When opening/closing the door, follow the location of people nearby.



- **Danger of falling** while sliding. Remove condensation from the door. Do not allow puddles to form around the display case. Immediately

remove the melted water leakage from the condensate bath (the condensate bath is located behind the display case, in the lower part)

- **Danger of breaking the glass** . Check the glass elements for the absence of such defects as : scratches, cracks, breaks. In case of damage, contact the service department immediately. Check if the door is closed. Watch for free passages when opening glass doors. Do not load the door. It is forbidden to store glass containers

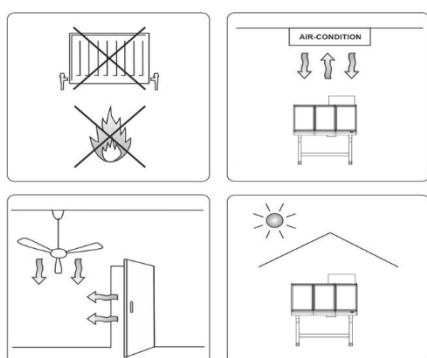


- **Danger of overturning the showcase. Danger of pinching people.** Only pick up transport pallets in a stable, supported position. Correctly attach the legs of the showcase to the floor. When drilling holes, take into account the characteristics of the floor and the base (floor heating, electric cables, etc.). Do not climb on the window or climb into it. After installation, only specialists are allowed to transport the showcase. (see chapter 7 for detailed installation instructions)



- **Danger of getting burned on hot surfaces of pipes and components of the refrigerating machine.** If it is necessary to touch the above components when servicing the showcase, you must first turn it off and wait for them to cool down.

5. PLACEMENT REQUIREMENTS



The showcase must be installed on a flat, horizontal surface.

Insufficient alignment or an unstable position can lead to deterioration of the performance of the display case.

IT IS FORBIDDEN! Install the showcase in the places indicated in the figure on the left:

- near a heat source (batteries, heating and cooking equipment);
- near doors and on drafts caused by opening doors or windows;
- in areas where a strong flow of air is possible (for example, output channels of climate, ventilation and heating systems);

- under direct sunlight.



The presence of air movement at a speed of more than 0.2 m/s in the installation area of the showcase deteriorates the operational characteristics of the refrigerating showcase. It is necessary to ensure free air circulation for the unit compartment in the area where the showcase is installed - a distance of at least 15 cm from the rear wall of the hood to the wall, to remove excess heat from the non- condenser .



IT IS PROHIBITED place in the unit compartment any foreign objects that interfere with the normal operation of the showcase.



When placing the display case on objects with fuel and lubricant materials, the display case must be installed and operated in accordance with the national rules for the operation of electrical equipment and the rules for operation on objects with fuel and lubricant materials. According to the requirements of UL 471, a display case filled with flammable refrigerant in facilities containing fuel and lubricants must be located at a level not less than 18 inches (450 mm) above ground level.



According to the requirements of EN 378-1-2014, the minimum volume of the room is regulated for showcases of refrigerators operating on a flammable refrigerant (for example, R290), based on the lower concentration limit of ignition. For example, for a showcase operating on R290 refrigerant, the minimum volume of the room in which it can be placed is 12.5 m³ for every 100 gr. filled refrigerant. In the case of placing several showcases operating on a flammable refrigerant in one room, the mass of their refueling is added up and the volume of the room must be selected in accordance with their total refueling (the mass of refueled gas is indicated on the nameplate).

In case of non-observance of the rules for installing the showcase, the operational characteristics may not correspond to the specified ones.

6. INSTALLATION AND CONNECTION



Work on the installation of the showcase and its connection to the electrical network must be performed only by qualified workers in accordance with current safety standards.

6.1. DISMANTLING OF FACILITIES

1. Disassemble the bars that are on top (Fig. 6.1.1, a)
2. Disassemble longitudinal gratings (Fig. 6.1.1, b)

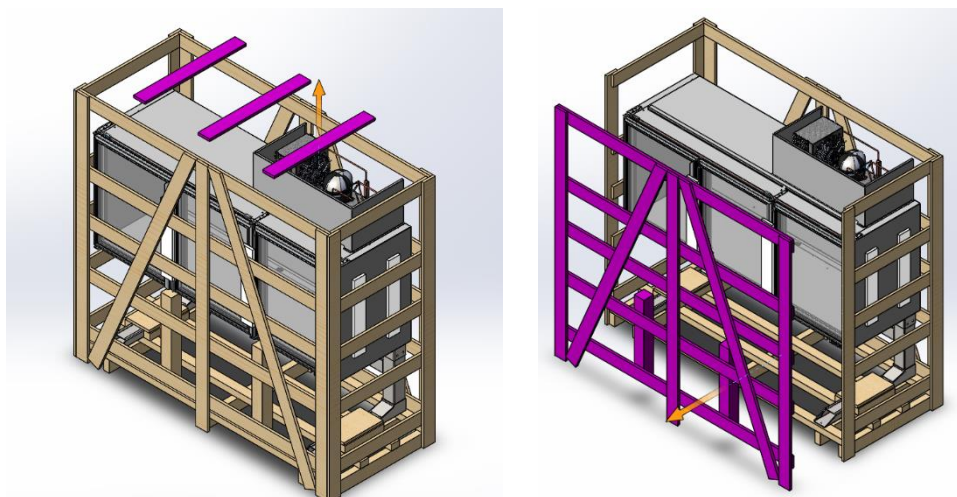


Fig. 6.1.1. a) the upper part of the cladding; b) longitudinal framing

3. Dismantle the end grills (Fig. 6.1.2.)

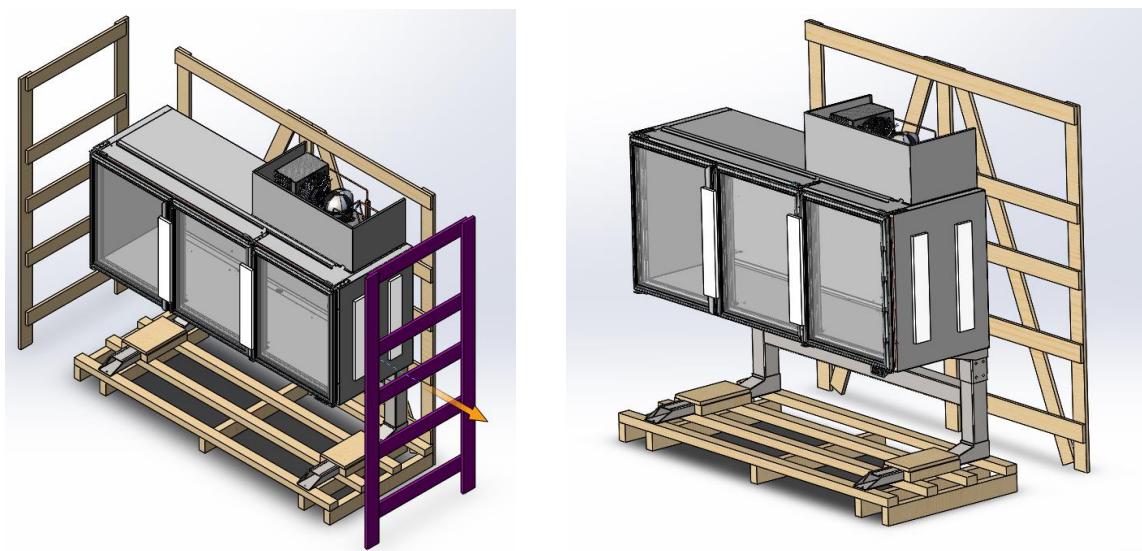


Fig. 6.1.2. End fittings

4. Dismantle the bars that fasten the showcase to the pallet (Fig. 6.1.3, a)

5. Remove the showcase from the pallet (Fig. 6.1.3, b)

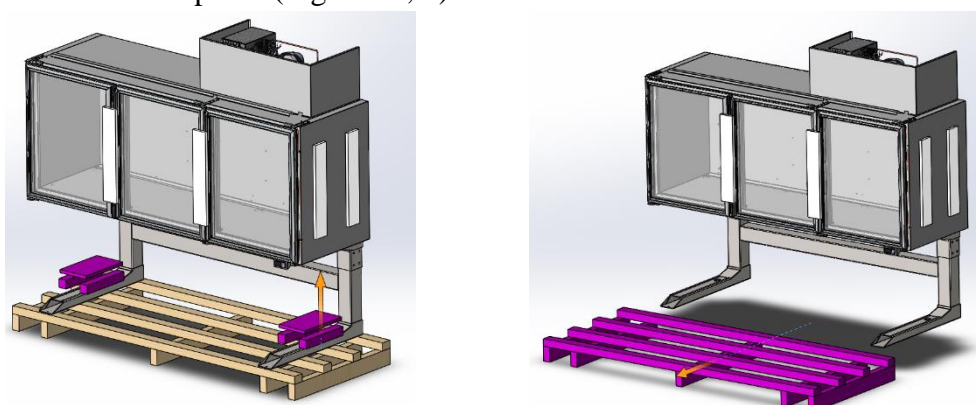


Fig. 6.1.3. a) location of fastening elements; b) pallet.

6.2. PREPARATION BEFORE OPERATION.

1. Unscrew the M6 screws that connect the stand to the back wall of the showcase (Fig. 6.1.4, a)

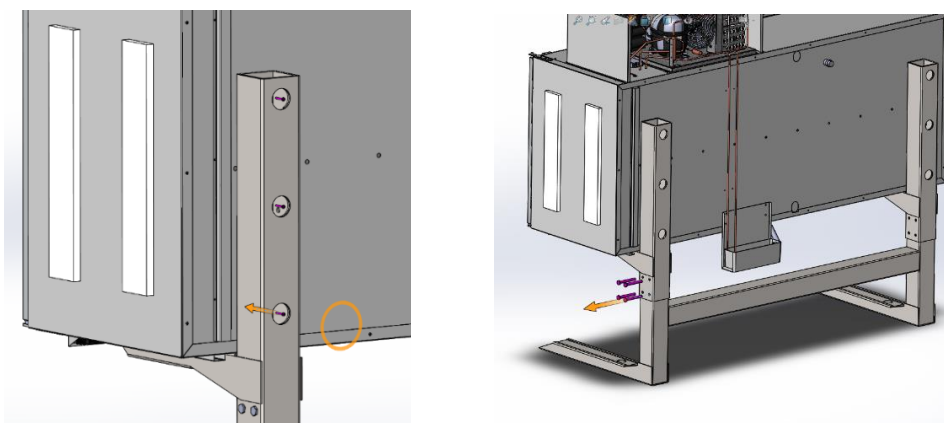


Figure 6.1.4. a) fixation of the stand with the body; b) fixation of the stand in the lower position.

2. Unscrew the M12 bolts that fix the stand in the lower position. Before twisting, support the showcase from below (Fig. 6.1.4, b).
3. Raise the stand to the upper position, fix with screws and bolts (Fig. 6.1.5).

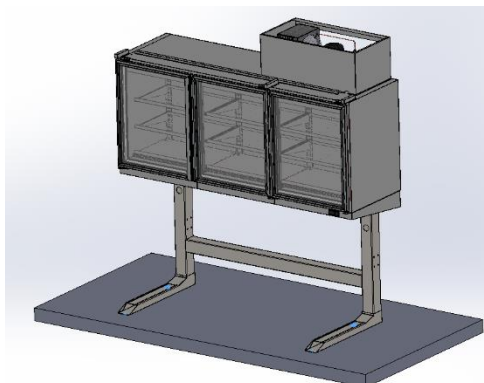


Fig. 6.1.5. The position of the stand for operating the showcase.

4. Installation of cladding brackets to the lower part of the showcase with m4 screws.

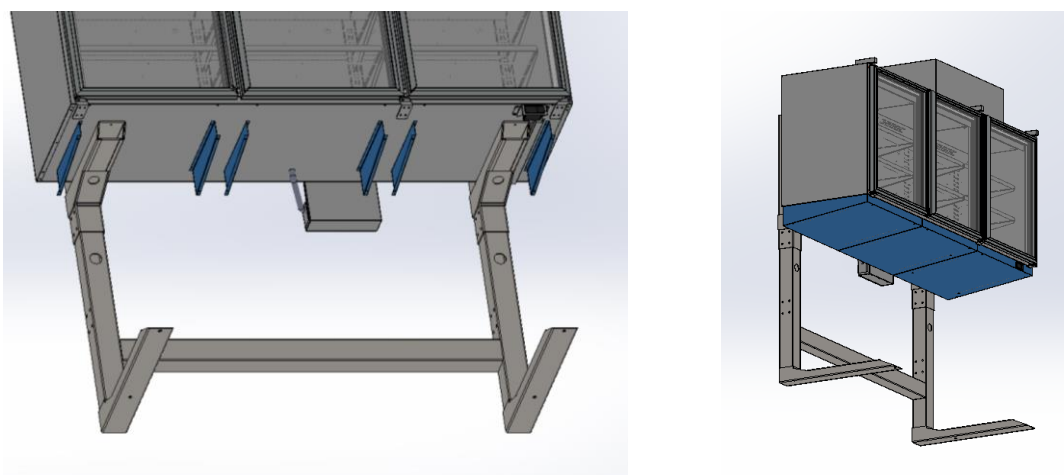


Fig. 6.1.6. a) rotation of brackets; b) general appearance of external facings.

5. Install the lower cladding and fix it with M4 bolts.
6. Fix the stand with M14 anchors (4 pcs.).

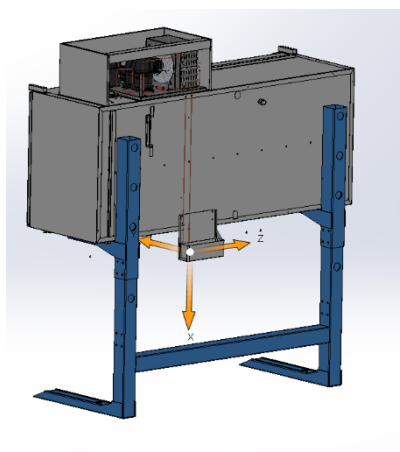
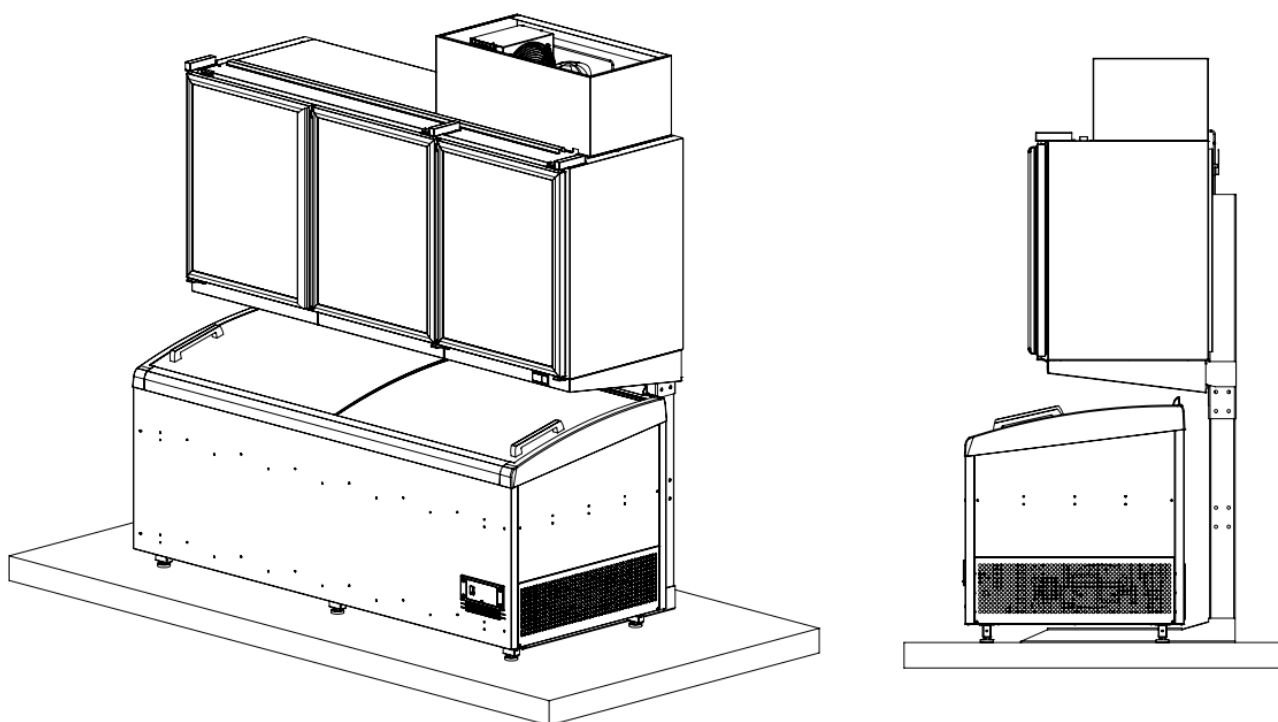


Fig. 6.1.7. Fixation of the showcase to the floor

The scheme of placement of the overbonnet showcase together with the bonnet



6.3. CONNECTION

! **IT IS FORBIDDEN !** E exploitation showcases without availability in the network ground contact sockets . Not allowed connection several showcase into one power outlet through an " extension cord " with branching outlets .

! **WARNING!** Before loading the product , the device must work for at least 3 hours door should be tight are closed

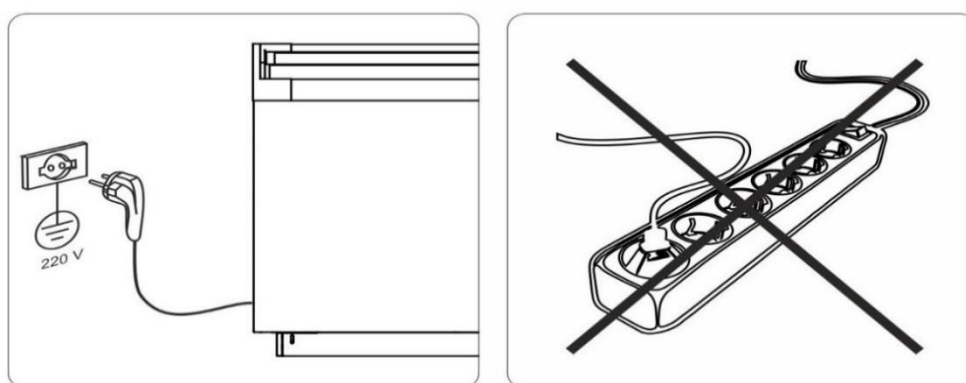


Figure 6.3.1. Showcase connection

Before connecting the showcase to the network, make sure that the voltage limits of the network correspond to the voltage indicated on the nameplate of the showcase. To ensure the reliable operation of the showcase, the voltage deviation in the network should be within -10%...+10% of the nominal value. The outlet should be placed in an easily accessible place for quick disconnection of the showcase, and should ensure reliable contact of electrically conductive parts (Fig. 5).

7. START-UP

The showcase must be installed in such a way as to ensure free access to it. Guided by the recommendations from Appendix B, prepare the product for work.



It is recommended to connect the showcase for the first time no earlier than 4 hours after its installation.

Connect the showcase as follows:

- connect the display case not loaded with products to the electrical network, using the display power cable;
- set the required temperature range on the controller according to item 10 of this manual;
- after reaching the required temperature (at least 3 hours after connection, the temperature is displayed on the controller), in the useful volume of the display case (up to the product loading line), load pre-cooled products.

Loading the display case with products must be carried out taking into account the data from table 1 (item 14 weight, kg, no more) and guided by the recommendations from appendix B.

The temperature regime set by the controller is maintained automatically.



Note: the temperature regime in the useful volume of the showcase must be set depending on the type of product loaded. In the case of equipping the display case with a night curtain, it is recommended to use it for economical mode of operation at night and faster exit of the display case to the working mode of loading products.

8. PRODUCT STORAGE TEMPERATURE

The temperature in the middle of the usable volume is displayed on the controller display. Adjustment of the readings of the temperature sensor is carried out in the programming mode exclusively by service personnel.



The temperature in the middle of the useful volume is set within the temperature regime, in accordance with the requirements of the product storage technology and the recommendations on the packaging.

9. TERMS OF OPERATION

The refrigerating display case is intended for operation in the middle of the premises with an ambient temperature of +16°C to +25°C with a relative humidity of no more than 80%, which meets the requirements for operation according to 3 climatic conditions.

The minimum temperature of the equipment must be at least +16°C before commissioning.

10. TEMPERATURE SETTING

The display temperature is set at the factory to maintain the temperature class/mode of the product specified by the manufacturer.

To ensure optimal storage temperature, it is recommended to save the settings.





A change in the temperature regime can lead to spoilage of the product.

Monitoring of compliance with the temperature regime is carried out using the Danfoss electronic controller ERC 112 C .



Fig. 10.1. Control elements of the Danfoss controller ERC 112 C

Control elements are buttons programmed as follows:





K button	Function _
	Short-term pressing : Increasing the set temperature (settings) Long press: defrost mode switch
	Short-term press : Decrease the set temperature (settings) Long press: defrost mode switch
	Short-term pressing : not used; Long press: Enter the information menu
	Short-term press : light switch (optional) Long press: on/off

Changing the set temperature (setting) :

1. The display shows the current temperature in the middle
2. Press " Up /Down" to access the set temperature (settings)
3. Press " Up /Down" to change the set temperature (settings) After 30 seconds. The display will automatically return to the current temperature .



Fig. 10.2. Display indication

Display indication	According to the display indication
-888	Temperature in volume. Operating mode code
	The cooling function is active
	Defrosting is active
	The evaporator fan is active
	Emergency signal

11. DEFROST MODE

The showcase has an automatic defrost function.

The frequency, duration and interval of the defrost start are set by the manufacturer at the factory.


Frequency of thawing

- 3 times a day (or according to the customer's requirements)

Duration of thawing

- Up to 60 minutes.

During automatic defrosting, the corresponding readings and symbols are shown on the display

Thermostat	Display indication	Symbol
Danfoss ERC 112C	DEF	

The melt water formed in the internal volume of the unit is diverted to a heated bath, where it evaporates.

The defrosting process can lead to a slight increase in the temperature on the thermostat indicator.

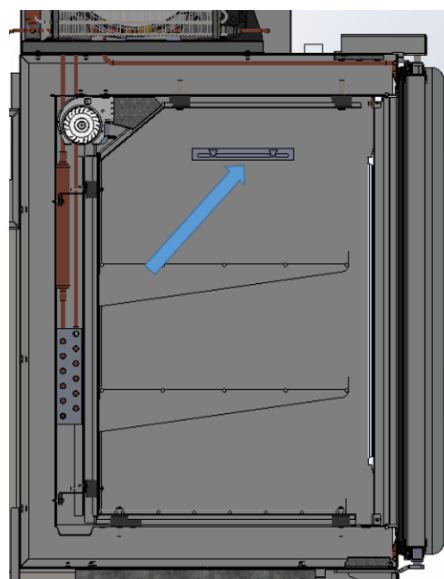
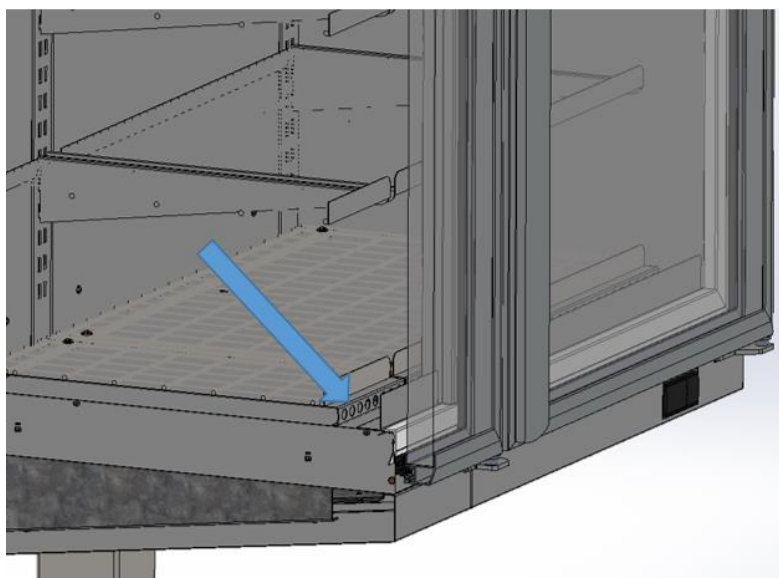


WARNING! Leakage of melt water.

- Do not allow the formation of puddles in front of and under the unit;
- Remove the melted water that has leaked out immediately;
- Contact the service department.

12. PRODUCT LOADING

To ensure the normal and uninterrupted operation of the display case, as well as uniform and high-quality cooling of products, a number of recommendations should be followed:



- it is forbidden to cover the cold air circulation holes inside the showcase with products
- loading of products should be carried out without exceeding the loading norms and without going beyond the "product loading line" mark;
- when laying out products, it is necessary to distribute them evenly over the entire area of the shelves;
- for uniform movement, it is necessary to leave gaps between the products and the walls of the case.
- during loading, the door must be open more than 90 degrees



The distance between the products and the case elements of the showcase should be at least 20-30 mm, and between rows of products at least 10 mm.

13. MAINTENANCE

Persons who have studied the principle of operation, the design of the display case and have undergone safety training are allowed to service the showcase.



In case of failure of any elements of the showcase, they must be replaced with similar ones in order to minimize the risk of possible ignition due to improperly selected components.



FORBIDDEN to use a refrigerant that does not correspond to the one indicated on the nameplate of the display case for refueling.



Technical maintenance of the showcase (except for the works specified in tab. 3) and troubleshooting is performed by specialists of the service center or the manufacturer's company according to the application for maintenance or repair.



WARNING! A false call * of a specialist is paid by the owner.

*A false call is considered a call if, at the time of the specialist's arrival, the showcase is functional and meets the technical characteristics specified in the operating instructions. The absence of the owner on the appointed day of execution of the application is equated to a false call.

The owner must carry out maintenance of the showcase during the entire period of operation, at the place of installation according to the recommendations given in table 3.

Table 3 - Recommendations for storefront maintenance

Types of service	Technical requirements	Equipment and materials
Cleaning the external surfaces of the showcase.	The external surfaces of the showcase must be clean.	Flannel, soap and soda solution.
Cleaning the showcase and cleaning the internal surfaces of the working chamber.	The internal surfaces of the working chamber must be clean.	Disinfectant .
Cleaning the heat exchange battery from dust and dirt.	The surface of the heat exchange battery must be clean, free of dust and dirt.	Vacuum cleaner, brush.
Checking the drain pipe	The pipe must be clean and free of debris.	Plumbing cable.

The periodicity of window cleaning and surface cleaning is determined by visual inspection and sanitary requirements of the product storage technology , but not less than once a month.



WARNING! Before you start cleaning the showcase, it must be disconnected from the electrical network.

Use gloves when cleaning. To wash the showcase, use neutral detergents and a soft cloth . Do not use flammable and abrasive materials, as well as detergents with an unknown chemical composition. Do not wash the display case with a direct stream of water. During cleaning, make sure that moisture does not get on the electrical elements of the showcase (fan, controller , lamp). Do not wash the glass surfaces and the inner case with boiling water .



WARNING! After wet cleaning, do not turn on the showcase until it is completely dry.

During the operation of the product, a layer of dust forms on the heat exchange battery, which prevents the removal of heat, as a result of which the performance of the showcase deteriorates. It is worth regularly cleaning the battery heat exchanger (the periodicity of cleaning depends on the degree of dustiness of the room in which the display case is placed).

Remove the protective grille (Figure 6) and inspect the assembly compartment for damage to the tubes, dust and dirt. Cleaning the heat exchange battery must be done carefully so as not to damage it. Use a brush with hard non-metallic bristles, a vacuum cleaner. After cleaning and inspection, install the grill back, check the reliability of fixing.



FORBIDDEN to clean the assembly part with a jet of water.

14. POSSIBLE FAULTS AND THEIR REMEDIES

lists the possible malfunctions of the showcase and how to eliminate them.

Table 4. List of possible display window malfunctions and ways to eliminate them

Description of the malfunction	Probable cause	Method of elimination
The shop window does not turn on	No voltage in the power grid	Ensure that the mains socket has the required voltage
	There is no contact of the plug with the network	Ensure tight contact of the plug with the outlet
	It worked automatic switch	Try switching on again, if the circuit breaker has tripped again when switched on, then the display case is faulty. Contact the service department
The lighting does not work	Faulty lamp	Replace the lamp
	Faulty power supply unit	Replace the power supply unit
	Damage to the wire	Replace the damaged wire
Increased noise	Showcase installed incorrectly.	Install the showcase according to the instructions
	Malfunction of parts in the aggregate part	Contact the service department
The showcase turns on, the compressor works, but the working chamber does not cool down	Refrigerant leak	Contact the service department
	Compressor failure	
The appearance of a non-characteristic smell	Contamination of the showcase	Thoroughly clean (wash and ventilate) the showcase from product residues and dirt
The products inside the showcase are freezing	Incorrect thermostat settings	Change the cut-off temperature on the controller
	Incorrect operation of the compressor	Contact the service department
The compressor is not running, the condenser fan is running	The starting relay has failed	Contact the service department
	Compressor failure	
The compressor and condenser fan are not working	Thermostat malfunction	Contact the service department
	Damaged power cord	
The formation of a large amount of moisture on the glass	The air in the room is too humid	Provide operating conditions in accordance with Section 6
	The temperature inside the display case is too low	Change the cut-off temperature on the controller

The door does not close	The door closing mechanism is damaged	Contact the service department
	Door sagging	

15. MAINTENANCE AND SERVICE

For trouble-free operation of the showcase, preventive maintenance must be carried out once every three months (if necessary, more often), namely:

- external inspection of the showcase;
- inspection of nodes and structural elements for the absence of external damage and the reliability of fastenings;
- cleaning of the melt water drain system;
- cleaning the condenser from dust and dirt, checking the movement of air through the condenser;
- checking the operation of the refrigerating unit (cooling of the useful volume of the display case, absence of extraneous noises, energy consumption within permissible deviations) ;
- inspection of electrical elements and wiring , checking the reliability of contact connections;
- checking and adjusting control elements;
- checking the display window's operating parameters.

The list of work required for the repair of the showcase is determined based on the results of defect analysis by specialists of the service department or the manufacturer's company.

16. STORAGE AND TRANSPORTATION

Transportation of the packed display case can be performed by any type of transport in the position of one tier.



During transportation, the display case must be securely fixed, it must not hit any objects. All loading and unloading operations must be carried out by qualified workers.



WARNING! During transportation, it is forbidden to turn the showcase upside down or on its side.

Before installation, store the display case in the package from the manufacturer, at a temperature of $-25\text{ }^{\circ}\text{C} \dots +55\text{ }^{\circ}\text{C}$ and a relative humidity of no more than 80%. The air should not contain vapors of acids, alkalis, and other impurities that cause corrosion.



WARNING!

It is forbidden to store the display case in open areas, to allow harmful effects of the environment (the action of ultraviolet rays can cause deformation of the plastic elements of the display case, moisture causes metal corrosion).

17. DISPOSAL

The display case is subject to disposal when the limit state is reached - the destruction of the elements of the display case, as a result of which it becomes an electrical or fire hazard.

For disposal:

- disconnect the showcase from the power grid;
- with the help of service specialists, release the refrigerant from the system;
- disposed of in accordance with current legislation, with the help of an enterprise that has a license for disposal.

18. WARRANTY FROM THE MANUFACTURER

The manufacturer guarantees the correct operation of the refrigerated display case in compliance with the requirements and rules of operation described in this manual, and undertakes warranty obligations for 1 year from the moment of sale, or the period specified in the contract.

The display case model, number and date of sale are indicated in the passport by the manufacturer, or the relevant data is indicated by the company selling the display case.



The manufacturer guarantees the normal operation of the refrigerating display case throughout the warranty period, subject to compliance with the operating rules and warranty repair in case of malfunctions not caused by non-compliance with the rules of this manual.



WARNING! After the end of the window's service life, it is necessary to call a specialist to determine the suitability of the bonnet for further use.

Authorized service	
<p>Poland : UBC Logistyka Sp . z o. o BYKOW, UL. GAJOWA 5 55-095 MIRKOW Wojtek Rytkowski tel.:+48717400076 / tel . com.: +48603227267 e - mail : w.rytkowski@beer-co.com</p>	<p>Bosnia : NICROM COOLING DOO Milan Vrhovca 79, 79101 Prijedor , Republic of Srpska , BiH Dragan Tankosic tel . :+38752213213 e - mail : dragan.tankosic@nicromcooling.com</p>
<p>Czech : ViGo-servis s.r.o. _ Havličkova 303 289 12 Třebestovice tel . : +420603295770 e - mail : vigo.psenikka@trebestovice.cz</p>	<p>Croatia , Slovenia : BEVERAGES SERVIS DOO Slavonska avenija 24/A, 10000, Zagreb , Croatia Endre Katona tel . :+385914390830 e - mail : endre.katona@beverages.hr</p>
<p>Slovakia : Chladservis KP, sro . Bottova 347/16 953 01 Golden Moravce phone : +421 903 119 163 e - mail : info@chladserviskp.sk</p>	<p>France : Interfroid services 143 Bd Pierre Lefauchaux - 72230 France Johann JOUANNEAU : 0243892926 e - mail : Johann.jouanneau@interfroidservices.fr</p>
<p>Hungary : THERMOTEKNIKA CROWN COOL HU: H1103 Budapest , Kőér u. 3/F. Zoltan Peszleg tel.:+36304757022 _ e - mail : peszleg.zoltan@tchungary.com</p>	<p>Germany : KTO GmbH Alte Römerstraße 9, 56154 Boppard-Buchholz Simon Sass tel . : +49 06742804828 e-mail: Simon.Sass@KTOGmbH.de</p>
<p>Greece : UNIOR Srl . Via Collodi , 4/g 40012 Calderara di Reno Bologna - Italy Luca Pancaldi Tel . +39 051 6467027 (10 lines ra .) E - mail : l.pancaldi@unior-service.com</p>	<p>Lithuania, Latvia : UAB "VR Servisas " Sandėlių g. 40 Klaipėda , Lithuania Robertas Skurdenis phone : +370 656 07507 e - mail : info@vrservisas.lt</p>
<p>Bulgaria : Ice Technic Ltd 1225 Sofia 61 Zhelezopatna Str . Vladimir Dimitrov tel . : +359888629539 e- mail : vladimir@icetechnic.com</p>	<p>Italy : UNIOR Srl . Via Collodi , 4/g 40012 Calderara di Reno Bologna - Italy Luca Pancaldi tel . +39 051 6467027 (10 lines ra .) e - mail : l.pancaldi@unior-service.com</p>
<p>Serbia : COOL BEER DOO Crkvište 5a, 11210 Krnjača Duško Advised te+381654977001 dusko.radjen@coolbeer.co.rs</p>	<p>Romania : THERMOTEKNIKA CROWN COOL RO: str Toplița , nr . 155, Miercurea Ciuc Csaba Balint tel . :+40266317827 e - mail : csbalint@tcromania.com</p>
<p>Ukraine : UBC Service Address : Kharkiv , Selyanka 110, Ukraine Contact person : Andriy Maydan Phone : +380503476869 e - mail : a.maydan@beer-co.com</p>	<p>Kazakhstan : UBC Service Address : ZHETUSU AUDANA, PRO. Suyinbai , 2 , tel.:+77777767010 e - mail : almaty@beer-co.com</p>
<p>Address manufacturer : LLC "GREEN COOL", st . Nemyrivske Shosse , 213, Vinnytsia , Vinnytsia region , Ukraine.</p>	